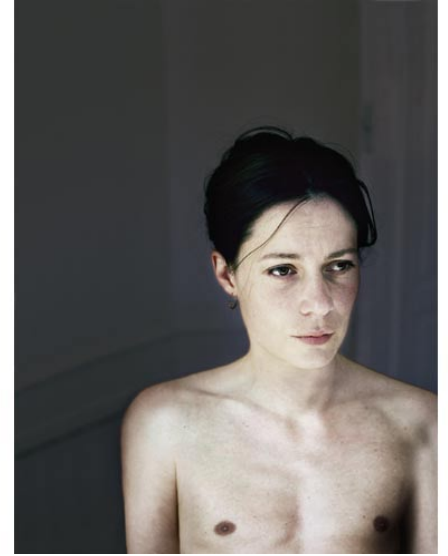

Signe Vad

Tableau

The work of Signe Vad (1967, Denmark) turns around the human body and identity. It tells stories about gender, the relationship between mind, body and beauty, loneliness, weakness and strength, inadequacies and self-sufficiency. The choice of accessories and environments translates the interrogation of the artist of the relations which bind a body to the world and leaves upon it, and within it, shadows, traces and signs: its story.



Woman with a rash at table, 2004



Sensitive shemale, 2004



Man leaning at table, 2004



Christine Magdalena, 2004

Contact presse

Beatrice Rossetto
Tel: +331 43 21 44 83
galerie@ewgalerie.com

Galerie Esther Woerdehoff
36, rue Falguière
75015 Paris – France
www.ewgalerie.com

"I like to challenge my self and my media. Photography being still such a young and developing art form has great opportunities to grow and refine.

It is not enough to make a nice picture anymore, we are in a process of refining the photographic art so it has deeper levels more current understanding, stronger concept and relates to contemporary art.

The classical project -Tableau is inspired by paintings from the renaissance to post impressionism.

I was invited to be part of a group exhibition in 2002, which had the themes of sex and erotic. This awoke a strong interest in classic art and the old masters manner of composing, freezing and portraying humanity. I was consumed by the charismatic charm and sensitive ridgedness of the figures, while at the same time the artist aroused great intensity and closeness in the stiffly composed portrayal. I was fixated by body posture and position, and especially the narrative expressed by the hands.

I went exploring in the internal narrative of my pictorial universe and found sediments of pictures that had deposited themselves since my childhood and upbringing. It was often an intuitive process, in which I found after completion which historical pictures had been the starting point. It was not always transparent which pictures had been the source of inspiration, but this was not important, on the contrary it was never my intention to think of specific paintings, but quite the opposite.

Technically I work with 4 by 5 inch film, so the process of photographing is very controlled, staged and slow. The quality is also very high, because of the big negatives.

That method works fabulous with the imagery, that is very stiff but also very passionable and emotional in a subtle, hidden, quiet way.

When I work with the models a lot of the process is very loose and not determined ahead of the shooting. The staging and the motive evolve from the situation, the room and the models body language. It doesn't make the image and motive coincidental, but it makes it intuitive.

The series Tableau developed into a narrative, which tells many tales. There are tales about gender, the relationship between mind, body and beauty, loneliness, weakness and strength and the inadequacies and self-sufficiency. The most thorough theme is creating oppositions in the simple. Existence is strange and complex, so we should take care not to simplify it."

Signe Vad

Artist	Signe Vad
	*1971 Living and working in Copenhagen, Denmark
Exhibitions	2008 Galleri Image "While We Swallow Deception", Aarhus, Denmark 2007 Galerie Esther Woerdehoff, Signe Vad, Loan Nguyen, Carla van de Puttelaar, Maarit Hohteri, Paris, France Maco Mexico 07 with Ashley Gallery Red Dot Fair- NYC 07 with Ashley Gallery Group exhibition, Pasewalk/Vorpommern Group exhibition, Waren/Mecklenborg New journal - group exhibition, Møstingshus Senko Studio 2006 Scope Miami 06 with Ashley Gallery Bridge Art Fair, Miami 06 with Ashley Gallery Art Toronto 06 with Ashley Gallery På Vej - group exhibition, Galleri Nakke Hage SIDESHOW - group exhibition, Galleri Signe Vad, Copenhagen, Denmark 2005 Forårsudstillingen - Charlottenborg Kompilation - with Jørn Zoega, Demo-Rum K.E. Den Fries udstillingsbygning RØD ZONE - group exhibition, Galleri Signe Vad VENUE - group exhibition, Galleri Signe Vad 2004 Kvinder stiller skarpt - group exhibition, Grevinde Danner Forårsudstillingen - Charlottenborg UNG - a social project, solo exhibition. Uturn UNG - a social project, social solo exhibition, Danmarks Pædagogiske universitet UNG - a social project, social solo exhibition, Øksenhallen 2003 Making Eyes - group exhibition. Fotografisk Center UNG - a social project, social solo exhibition, Københavns Pædagogseminarium UNG - a social project, social solo exhibition, Familie og arbejdsmarkedsstyrelsen
Collections	2005 The National Photomuseum, the Royal Library